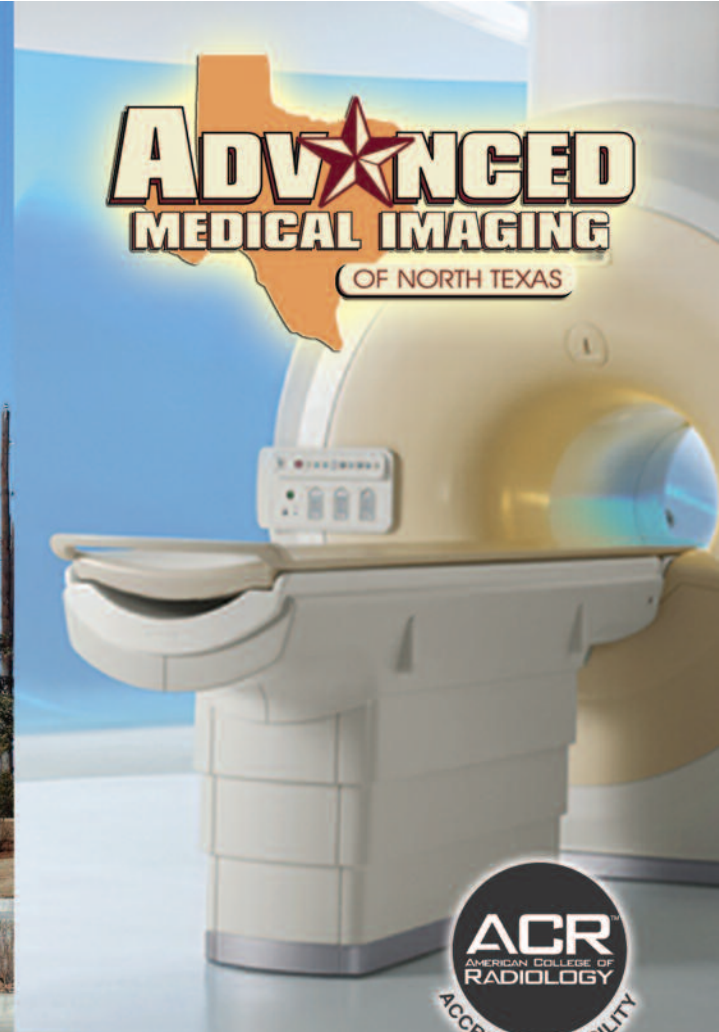


## SCHEDULING / REGISTRATION

Our registration process is one of ease. The patient is not required to complete numerous forms, as the majority of information has been obtained from the referring physicians office, and pre-certification has been insured.

All demographics are scanned in our Electronic Health Record, creating a virtually paperless office.



*We offer Same Day Services  
and Walk In X-rays  
in most cases*

2622 Highway 75 North

Sherman, Texas 75090

Phone: 903.868.8730 Fax: 903.868.8740

Hours of Operation:

Monday & Friday 8am - 5pm

Tuesday, Wednesday & Thursday 8am - 9pm

Saturday 8am - 12pm

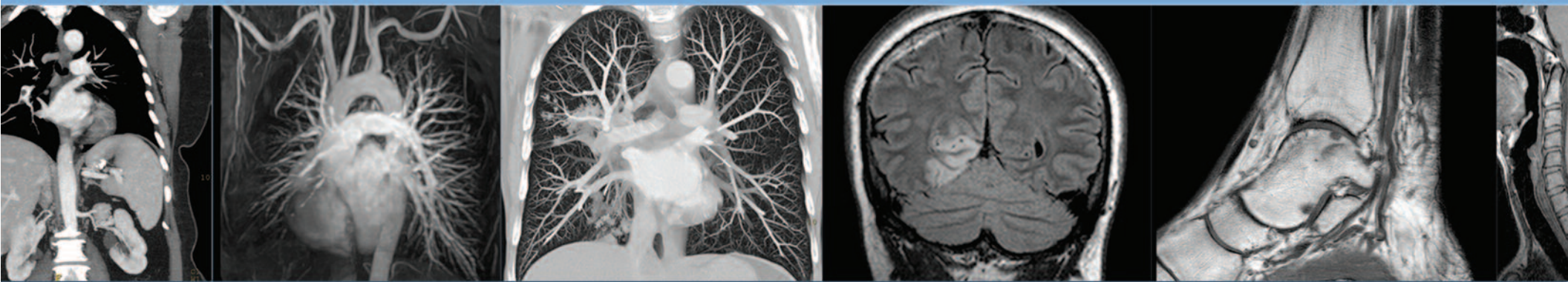
“Extended Hours Offered For Patient Convenience”



*“The Solution  
for all your  
Imaging Needs!”*



[www.amintx.com](http://www.amintx.com)



## *The Most Advanced Diagnostic Imaging Center in North Texas!*

*Advanced Medical Imaging of North Texas (AMINT) offers a full range of radiology services.*

*Our center is designed to offer patients and physicians the highest quality of radiology and diagnostic imaging services in North Texas!*

### *Our Technology*

Referring physicians can expect exceptional images with the ability to view them through our fully digital PACS system on the internet. Dictated patient reports are forwarded to the referring physician often times, within minutes of the patients having their procedure.



### *Our Staff*

Our goal at Advanced Medical Imaging is to provide the highest quality imaging services to our patients, in an inviting and friendly atmosphere. Our patients are very important to us and will always be treated with compassion and respect. Because of these qualities, we were honored to be voted "Best of Texoma 2009"!



Our Board Certified radiologists are a combined group of twelve highly trained physicians, each having a sub-specialty in Radiology. The radiologists provide timely interpretations to the referring physicians, allowing for prompt diagnosis and treatment.



### *Our Equipment / Services*

- 3.0 Tesla MRI unit
- Breast MRI
- 64 slice CT Scanner
- Cardiac CT
- Calcium Scoring Scans
- Full-Body Scans
- Radiology & Fluoroscopy Suite
- Myelograms
- HD Ultrasound Suite



*Sherman,  
Texas*